

HAUS  
**LADEMANN**  
FISCHERINSEL

**LAKE HOUSE**

GW16

Wallstraße 85 • Berlin-Mitte

---

|          |            |
|----------|------------|
| POSITION | GF/MZ/RF   |
| ROOMS    | 3          |
| SIZE     | 101,74 SQM |

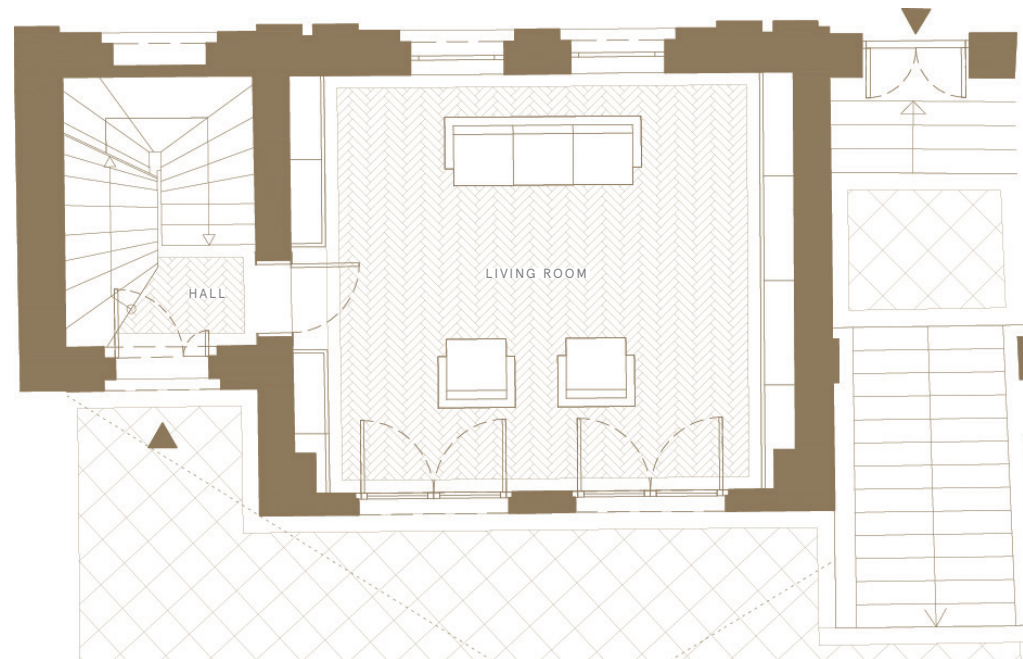
---

Floorplan 1/3

---

|             |           |
|-------------|-----------|
| LIVING ROOM | 28,48 SQM |
| HALL        | 2,62 SQM  |

---



Ground floor



View from the northwest -  
Spree aspect

HAUS  
**LADEMANN**  
FISCHERINSEL

**LAKE HOUSE**

GW16

Wallstraße 85 • Berlin-Mitte

---

|          |            |
|----------|------------|
| POSITION | GF/MZ/RF   |
| ROOMS    | 3          |
| SIZE     | 101,74 SQM |

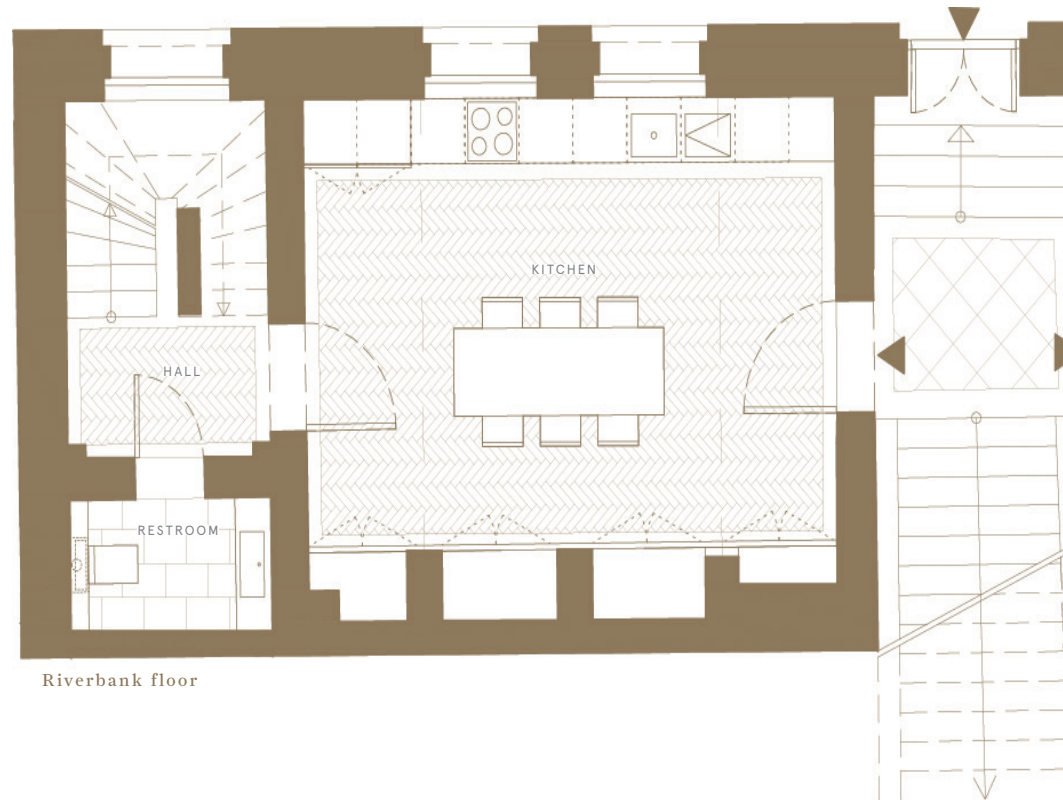
---

Floorplan 2/3

---

|          |           |
|----------|-----------|
| KITCHEN  | 27,11 SQM |
| HALL     | 3,57 SQM  |
| RESTROOM | 2,48 SQM  |

---



Riverbank floor



View from the northwest -  
Spree aspect

HAUS  
**LADEMANN**  
FISCHERINSEL

**LAKE HOUSE**

GW16

Wallstraße 85 • Berlin-Mitte

---

|          |            |
|----------|------------|
| POSITION | GF/MZ/SG   |
| ROOMS    | 3          |
| SIZE     | 101,74 SQM |

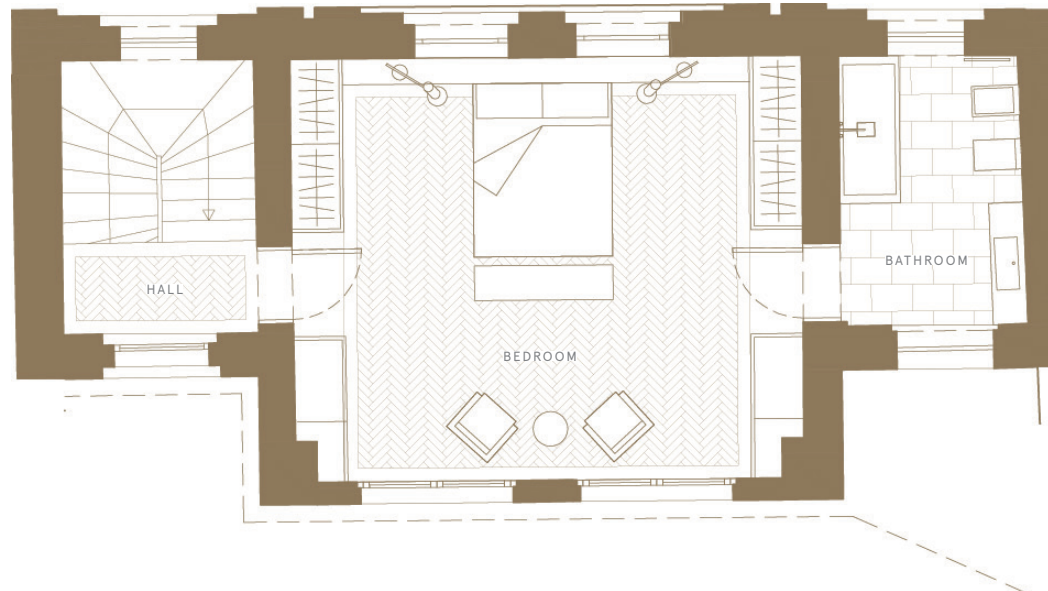
---

Floorplan 3/3

---

|          |           |
|----------|-----------|
| BEDROOM  | 28,53 SQM |
| HALL     | 2,38 SQM  |
| BATHROOM | 6,57 SQM  |

---



Mezzanine



View from the northwest -  
Spree aspect