

HAUS
LADEMANN
FISCHERINSEL

GALLERY

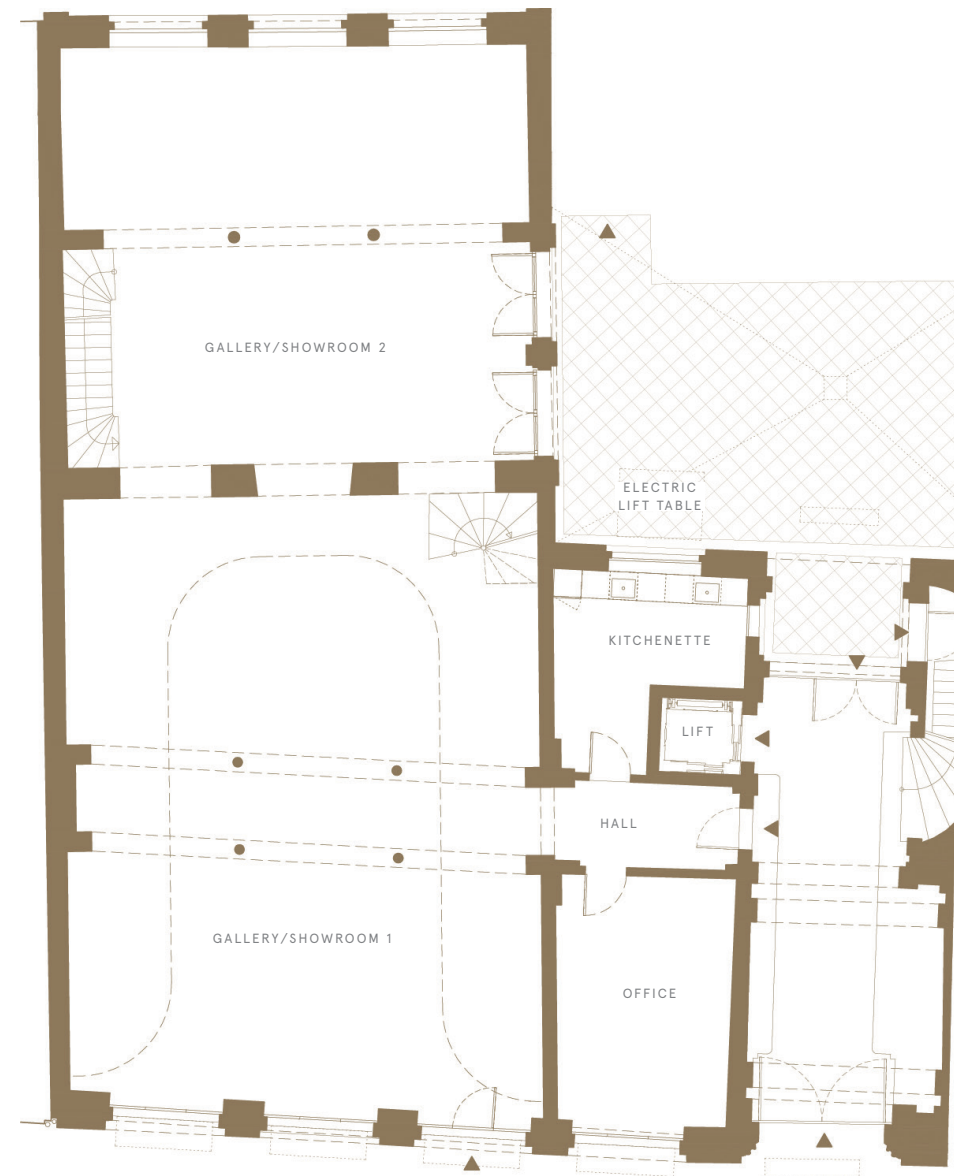
GW15

Wallstraße 85 • Berlin-Mitte

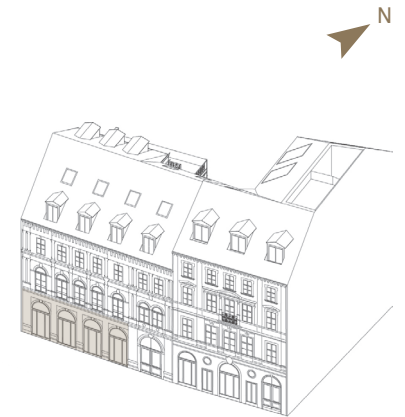
POSITION	GF/MZ/SG
ROOMS	5
SIZE	677,41 SQM

Floorplan 1/3

GALLERY/ SHOWROOM 1	135,60 SQM
GALLERY/ SHOWROOM 2	85,57 SQM
KITCHENETTE 1	13,73 SQM
HALL	8,00 SQM
OFFICE	20,58 SQM



Ground floor



View from the southeast -
Wallstraße

HAUS
LADEMANN
FISCHERINSEL

GALLERY

GW15

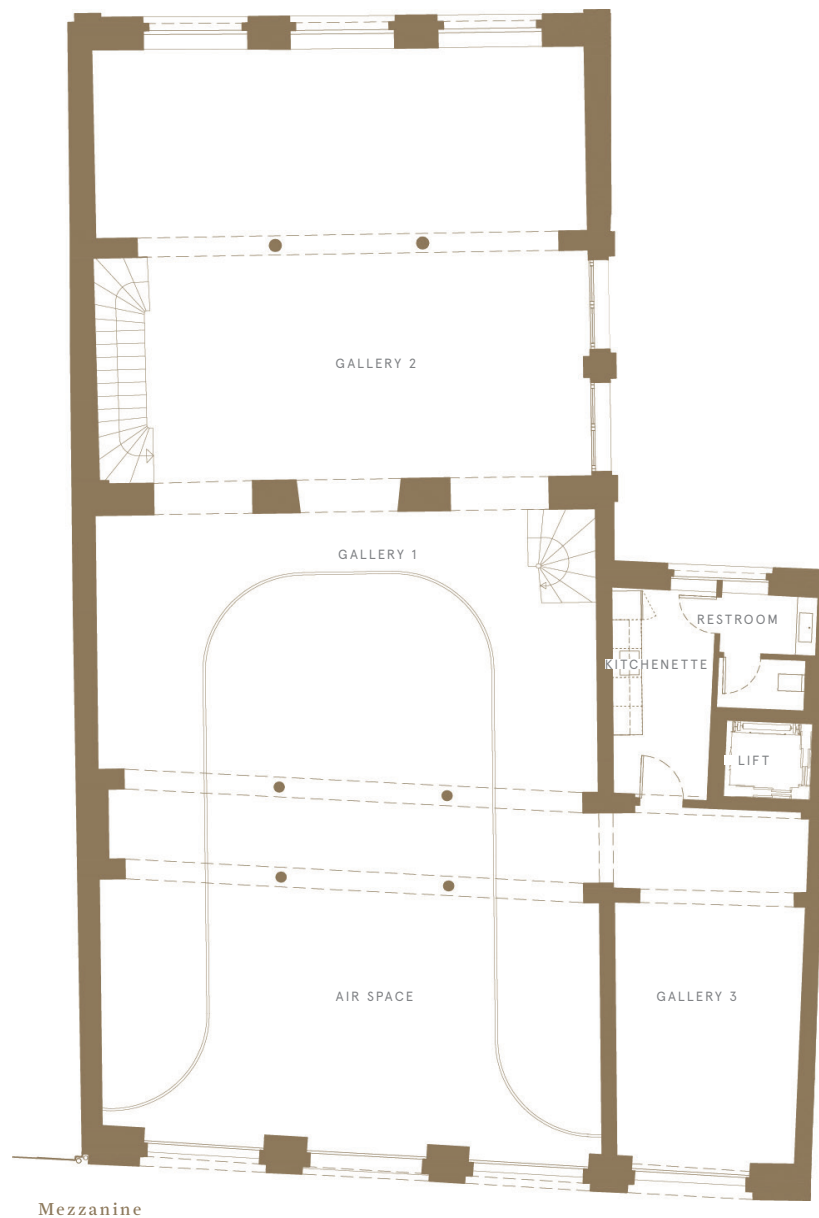
Wallstraße 85 • Berlin-Mitte

POSITION	GF/MZ/SG
ROOMS	5
SIZE	677,41 SQM

Floorplan 2/3

GALLERY 1	60,20 SQM
GALLERY 2	88,73 SQM
GALLERY 3	29,19 SQM
KITCHENETTE	8,81 SQM
RESTROOM	4,38 SQM

Christmann Projekt-Entwicklung GmbH
Kurfürstendamm 136 • 10711 Berlin • Deutschland
+ 49 30 31 01 80 20 • info@christmann.ag
Haus-Lademann.de



View from the southeast -
Wallstraße

HAUS
LADEMANN
FISCHERINSEL

GALLERY

GW15

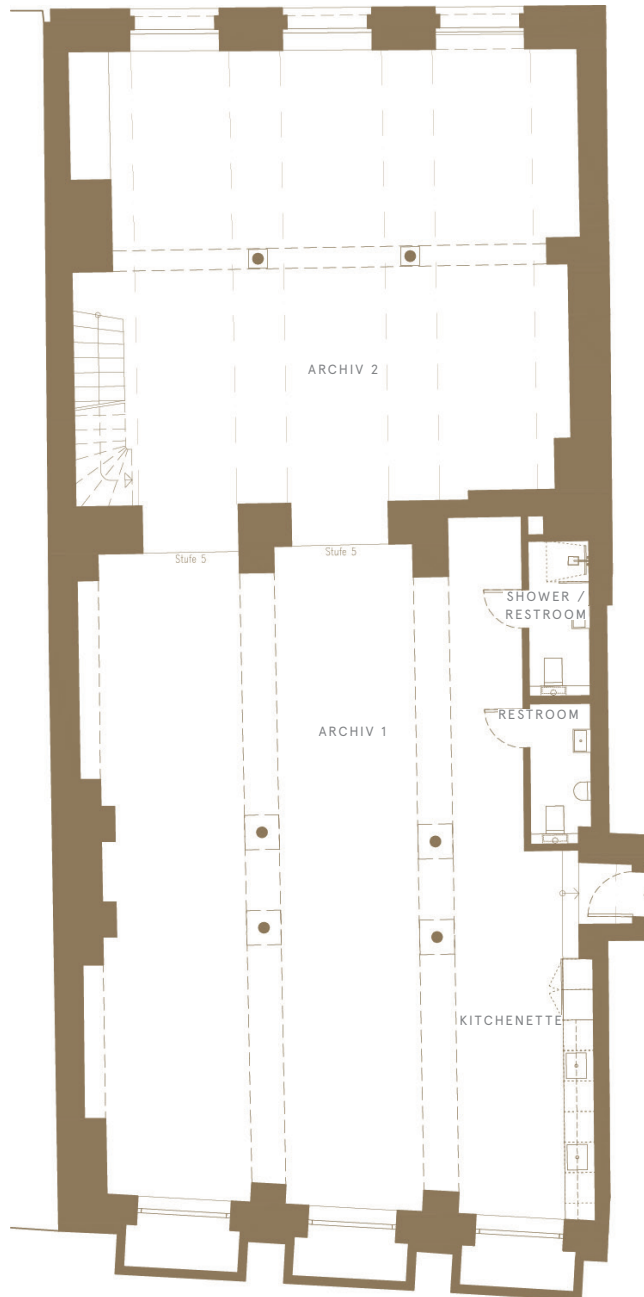
Wallstraße 85 • Berlin-Mitte

POSITION	GF/MZ/RF
ROOMS	5
SIZE	677,41 SQM

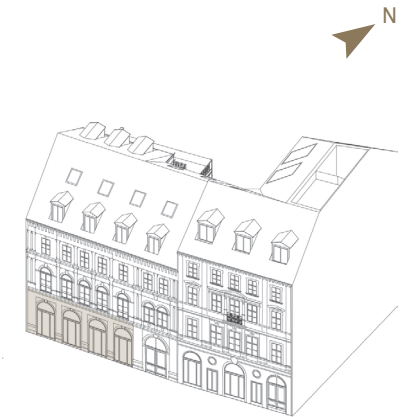
Floorplan 3/3

ARCHIV 1	106,48 SQM
ARCHIV 2	85,86 SQM
SHOWER/RESTROOM	3,43 SQM
KITCHENETTE	13,73 SQM
RESTROOM	3,04 SQM

Christmann Projekt-Entwicklung GmbH
Kurfürstendamm 136 • 10711 Berlin • Deutschland
+ 49 30 31 01 80 20 • info@christmann.ag
Haus-Lademann.de



Riverbank floor



View from the southeast -
Wallstraße